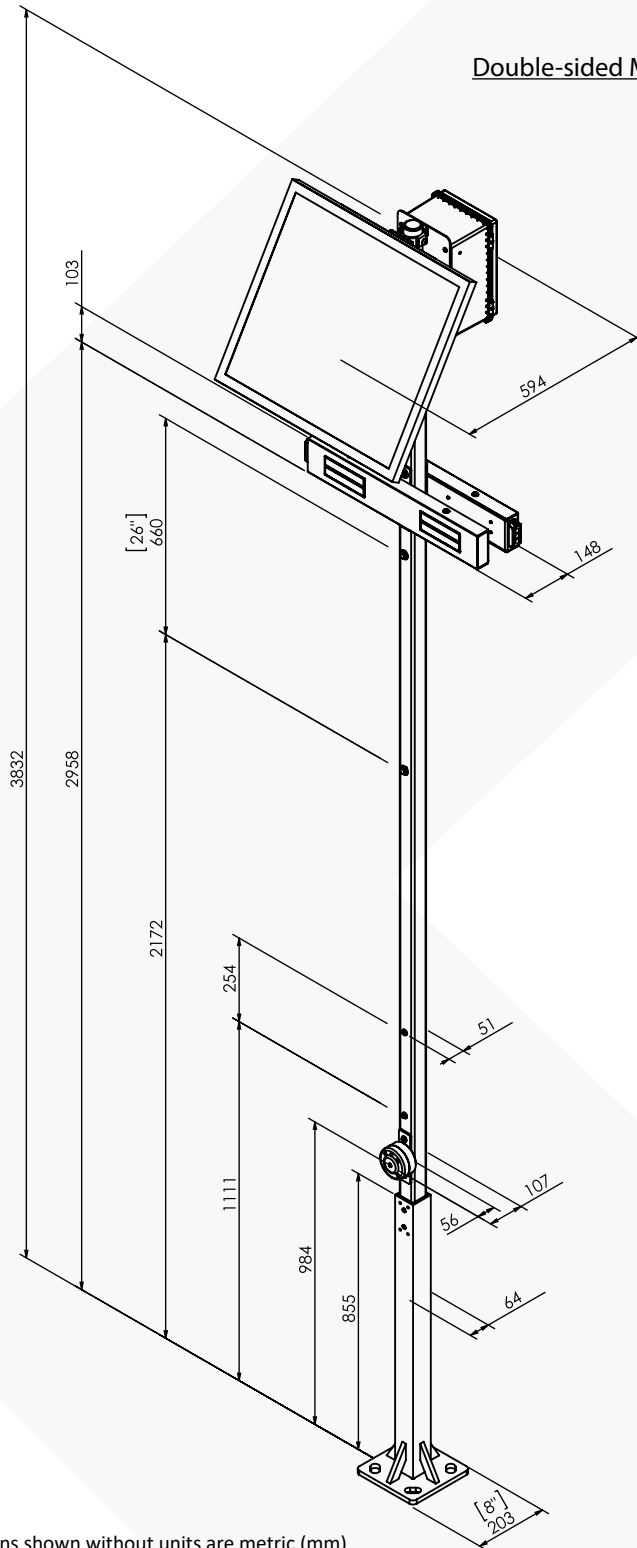


Design

Modular system with weatherproof control box, allowing excellent protection of control module, battery and radio antenna. Easy access and maintenance, can run diagnosis and make transit time adjustments. Control module includes multiple indicator lights for battery, charging system and flashing pattern statuses. Post, beacon LED casing and solar panel bracket are all aluminum made with a black powder-coat paint finish. More colours available on demand.

Double-sided Model

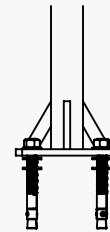


Dimensions shown without units are metric (mm)

Installation Possibilities

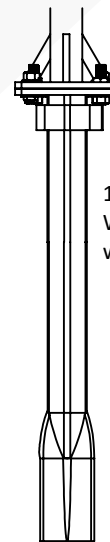
Dedicated post with multiple installation possibilities, including in concrete, in ground and above ground. Optional cable channel allows installation on any type of post (structural strength of desired post must be approved beforehand).

Option : Standard Anchors, in concrete



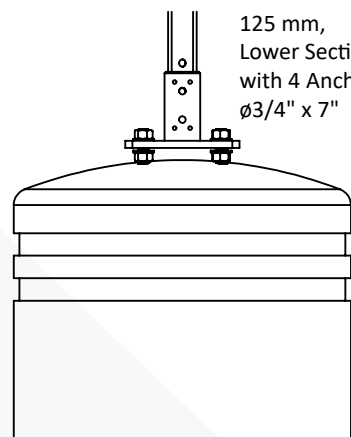
4 Anchors Kit
ø3/4" x 7"

Option : Buried Anchor, in ground



1200 mm,
Welded Plate Anchor
with stabilizers

Option : Concrete Base, above ground
(Base not included)



125 mm,
Lower Section
with 4 Anchors
ø3/4" x 7"

Solar Panel with Control Box		Rectangular Rapid Flash Beacon (RRFB)	
<p style="text-align: center;">Double-Sided Model</p> <p>Dimensions shown in metric (mm)</p>		<p>Dimensions shown in metric (mm)</p>	
System Overview		Power Management	
Certification	<ul style="list-style-type: none"> - UL and CSA certified electrical components - Nema 4 certified cabinet - E9 certified LEDs 	Battery	<ul style="list-style-type: none"> - AGM 12 V/20 Ah, UL certified, easy access and maintenance - Operating temperature : -40 to +60°C (-40 to +140°F)
Compliance	<ul style="list-style-type: none"> - FCC EMC - IC, CE and C-Thick approved 	Battery Life (Autonomy)	<ul style="list-style-type: none"> - 12 days without charging (double-sided model) - 25 days without charging (single-sided model) - 300 cycles per day in normal operation, 20 seconds activations
Activation	<ul style="list-style-type: none"> - Piezo, bulldog polara 3 press button - More activation methods available on demand 	LED Module	
Flashing Patterns	<ul style="list-style-type: none"> - MUTCD 4(09)-21 (I) — 6/13/2012 - WW+S - MTQ Volume V compliant, table 8,19-1 (75 cycles/min) - 500 500 - More patterns available on demand 	Brightness	- Automatic brightness, following ambient lighting conditions
Cabling	- UL and CSA approved cables, molded connectors	Standard	- E-9 certified amber LEDs, 58 x 140 mm (2.3 x 5.5")
Activation Duration	<ul style="list-style-type: none"> - 1 to 60 seconds, 1 s increments, longer durations available on demand - Flashing cycle reset when reactivated if beacon is already on 	Beacon Swivel	- Beacon swiveling module available on demand
Operating Temperature	- from -40 to +60°C (-40 to +140°F)	Indicator Light	<ul style="list-style-type: none"> - Lateral amber indicator light, 25 x 50 mm (1 x 2") - Optional second indicator light
Voltage	- 12 VDC nominal, beacon and controls	Communication	
Solar Panel	<ul style="list-style-type: none"> - 12 V monocrystalline - 50 W if double-sided - 20 W if single-sided only - CE and TUV certified - AC powered version also available (with or without battery save feature) 	Type	<ul style="list-style-type: none"> - ISM, 2.4 GHz spread spectrum radio band - 750 m line of sight - Up to 12 channels to avoid interferences